



# Skandia Sail for Gold Regatta 2011

Weymouth and Portland – Great Britain  
5th – 11th June 2011

A 2010-2011 ISAF Sailing World Cup Regatta

## SAILING INSTRUCTIONS

*"These sailing instructions are divided into sections. Section 1 applies to all competition on the water. Section 2 (beginning with SI 20) applies only to fleet racing. Section 3 (beginning with SI 30) applies only to match racing. Section 4 (beginning with SI 40) contains other instructions for all racing."*



# SAILING INSTRUCTIONS

## Section 1 - All Racing

### 1 RULES

- 1.1 The regatta will be governed by the rules as defined in *The Racing Rules of Sailing* (RRS).
- 1.2 The RYA prescriptions that apply are stated in full in NoR Addendum B
- 1.3 Decisions of the International Jury will be final as provided in RRS 70.5.
- 1.4 If there is a conflict between languages the English text will take precedence

### 2 SAFETY REGULATIONS

- 2.1 The race committee will protest a boat for a breach of these safety regulations.
- 2.2 Competitors are advised to wear personal flotation devices at all times while afloat, except briefly while changing or adjusting clothing or personal equipment.
- 2.3 FOR RS:X SAILORS ONLY  
All RS:X sailors shall collect a tally, comprising a numbered rubber wristband, prior to going afloat, from the tally board located in the boat park next to the Beachmaster's hut. This tally will be returned to the tally board immediately the sailor returns to shore after racing.  
The penalty for failure to comply with this instruction will be at the discretion of the International Jury.
- 2.4 Boats not leaving the harbour for a scheduled race shall promptly notify the Race Office.
- 2.5 On arrival in the racing area each day, each boat shall sail past the stern of the race committee signal boat on starboard tack and hail her sail or bow number until acknowledged by the race committee.
- 2.6 A boat that retires from racing shall notify the race committee before leaving the racing area, or if that is not possible, shall notify the race office as soon as possible after returning ashore.
- 2.7 Boats retiring from racing in accordance with SI 2.6 shall complete a retirement declaration form at the race office before the protest time limit.
- 2.8 In accordance with SI 41, Berthing, boats shall return to and remain in their assigned berths.
- 2.9 Boats shall avoid commercial traffic.
- 2.10 When the race committee displays flag V with repetitive sounds, all official and support boats shall monitor the race committee radio channel for search and rescue instructions.
- 2.11 Additional Safety Information

The Race Office and Medical Centre phone number is 07795 117818, contact Olivia Risk



### 3 CODE OF CONDUCT

- 3.1 Competitors shall comply with any reasonable request from a regatta official.
- 3.2 Competitors shall handle boats and equipment provided by the organising authority with proper care and seamanship and in accordance with SI Addendum E.

### 4 COURSE AREAS

- 4.1 The course areas are shown in SI Addendum A.
- 4.2 Events are assigned to course areas as stated in SI Addendum C.
- 4.3 For the medal races, two race course areas will be used. Their locations will be posted on the official notice board.

### 5 THE COURSES

- 5.1 The diagrams in SI Addendum B show the courses, the course designations, the approximate angles between legs, the order in which marks are to be passed, and the side on which each mark is to be left.
- 5.2 No later than the warning signal, the race committee signal boat will display the course designation and except for boards and match racing, the approximate compass bearing of the first leg.

### 6 MARKS

- 6.1 Marks 1, 1A, 2, 3, 4 and associated gate marks, and starting and finishing line marks will be inflatable marks as follows:

Area	Marks 1, 2, 3, 4	New Mark	Inflatable Starting Line Mark	Finishing Line Mark
Alpha	Orange cylinder, with Yellow cylinder for <b>Sonar</b> mark 1	Orange cylinder		
Bravo	Blue cylinder	Blue cylinder		
Charlie	Yellow cylinder	Red or Green cylinder	Orange cylinder	Orange cylinder
Delta	Yellow cylinder	Yellow cylinder		
Echo	Black cylinder	Black cylinder		
Foxtrot	Orange cylinder, with Orange cylinder with green stripe for <b>Star</b> mark 1	Orange cylinder		
Golf	Red cylinder	Red cylinder		
Medal A	Red cylinder	Red cylinder		
Medal B	Yellow cylinder	Yellow cylinder		

- 6.2 Offset marks, 1A, will be inflatable yellow cylinder

- 6.3 Marks S1, S2, and S3, will be inflatable orange cylinders with a green stripe.
- 6.4 The starting marks will be race committee vessels except on Charlie area where the line will be inflatable orange mark at one end and the RC vessel at the other end.
- 6.5 The finishing marks will be committee vessels or, a buoy with an orange flag or, an inflatable orange mark at one end and the RC vessel at the other end.

## 7 CLASS FLAGS

Class flags will be class insignia on the following background:

Event	Class Insignia	Background Colour
Men's One Person Dinghy	Laser Standard	White
Women's One Person Dinghy	Laser Radial	Light Blue
Men's One Person Dinghy Heavy	Finn	White
Men's Two Person Dinghy	470 M	White
Women's Two Person Dinghy	470 W	Light Blue
Men's Two Person Dinghy High Performance	49er	White
Men's Keelboat	Star	White
Women's Keelboat Match Racing	Elliott 6M	Light Blue
Men's Windsurfer	RS:X M	White
Women's Windsurfer	RS:X W	Light Blue
One Person Paralympic	2.4 mR	White
Two Person Paralympic	SKUD18	White
Three Person Paralympic	Sonar	White

## 8 THE START

- 8.1 The starting line will be between a staff displaying an orange flag on the race committee vessel at the starboard end and either
- the course side of the port-end inflatable starting mark, or
  - a staff displaying an orange flag on the race committee vessel at the port end.
- 8.2 A buoy may be attached to the race committee starting boat anchor line just below keel depth. Boats shall not pass between this buoy and the race committee starting boat at any time. This buoy is part of the race committee starting boat ground tackle.
- 8.3 Boats whose warning signal has not been made shall avoid the starting area. The starting area is defined as a rectangle 50 metres from the starting line and marks in all directions.

## 9 THE FINISH

The finishing line will be between a staff displaying an orange flag on the race committee vessel and either:

- (a) the nearby finishing mark buoy with an orange flag or
- (b) the nearby inflatable mark or
- (c) a staff displaying an orange flag on the nearby race committee vessel.

## 10 TIME LIMITS AND TARGET TIMES

10.1 Except for medal races, time limits and target times are as follows:

Class	Time Limit	Mark 1 Time Limit	Finish Window	Target Time
470, Laser Radial, Laser Standard	90	30	20	60
49er	50	20	10	30
Elliott 6M	None	None	5	16 to 18
Finn, Star	115	40	25	75
RS:X	50	15	15	30 to 35
Paralympic Events	90	30	20	60

10.2 Time limits and target times for medal races are as follows:

Class	Time Limit	Mark 1 Time Limit	Finish Window	Target Time
RS:X	50	15	10	20
All other classes	50	30	10	30

10.3 If no boat has passed Mark 1 within the Mark 1 Time Limit the race will be abandoned.

10.4 Boats failing to finish within the time stated in the Finish Window after the first boat sails the course and finishes will be scored Did Not Finish. This changes RRS 35, A4 and A5.

## 11 COMMUNICATIONS WITH COMPETITORS

11.1 Notices to competitors will be posted on the official notice board(s) located next to the Race Office.

11.2 When a visual signal is displayed over an area, event, fleet, or match flag, the signal applies only to that area, event, fleet or match. This changes the Race Signals preamble.

11.3 Signals ashore will be displayed at the flag pole located beside the Beachmaster's hut in the boat park.

- 11.4 When flag AP is displayed ashore, '1 minute' is replaced with 'not less than 30 minutes' in the race signal AP. Flag AP over H displayed ashore means 'Boats shall not leave the harbour. Wait for further instructions.' This changes Race Signals AP over H.
- 11.5 When flag Y is displayed ashore, RRS 40 applies at all times while afloat. This changes the Part 4 preamble.

## 12 CHANGES TO SAILING INSTRUCTIONS

- 12.1 Except as permitted in SI 32, any change to the format or schedule of races will be posted by **2000** on the day before it will take effect and any changes to the sailing instructions will be posted before **0900** on the day it will take effect.
- 12.2 Any reassignment of events or fleets to racing areas will be posted before **0900** on the day it will take effect, or if flag AP is displayed ashore, 30 minutes before flag AP for that class or fleet is removed.

## 13 EQUIPMENT AND MEASUREMENT CHECKS

- 13.1 Details of pre-first race equipment inspection, location and schedules will be posted on the official notice board.
- 13.2 Equipment may be inspected at any time for compliance with the class rules and sailing instructions. When instructed by an event equipment inspector, a boat shall proceed immediately to a designated area for inspection.
- 13.3 Boats shall apply Equipment Limitation Control stickers to specified equipment and sign a declaration of compliance prior to racing.

## 14 REPLACEMENT OF CREW OR EQUIPMENT

- 14.1 Substitution of competitors will not be allowed without prior written approval of the race committee and shall comply with any restrictions in the Notice of Race.
- 14.2 Substitution of damaged or lost equipment will not be allowed unless approved by the race committee. Requests for substitution shall be made to the race committee at the first reasonable opportunity.

## 15 OFFICIAL BOATS

- 15.1 Official boats will be marked as follows:

Equipment Inspection	Flag with MEASURER
Judges and Umpires	Flag with JURY
Media	Flag with PRESS
Race Committee	Flag of the course area colour
Rescue	Flag of the course area colour

- 15.2 Actions by official boats or helicopters shall not be grounds for requesting redress by a boat. This changes RRS 60.1(b).

## 16 SUPPORT AND SPECTATOR BOATS

16.1 Support boats shall be marked in compliance with NoR 15.2.

16.2 Support boats shall not interfere with boats racing or official boats, or create a wake that affects boats racing.

16.3 Support boats shall not be positioned:

16.3.1 Closer than 50 metres of any boat racing.

16.3.2 Within 50 metres of the starting line and marks from the time of the preparatory signal until all boats have left the starting area, or the race committee signals a postponement, general recall or abandonment.

16.3.3 Between any boat racing and the next mark of the course.

16.3.4 Between the inner and outer trapezoid courses when boats are racing on both courses.

16.3.5 Within 50 metres of any mark of the course while boats are in the vicinity of that mark.

16.3.6 Within 50 metres of the finishing line and marks while boats are finishing.

16.4 In addition, support boats that are motoring above 5 knots shall remain at least 150 metres from any boat racing.

16.5 Support boats shall comply with any reasonable request from a regatta official.

16.6 Additional restrictions apply to medal races and will be posted on the official notice board.

16.7 The International Jury may direct the organizing authority to revoke privileges from any boat or person found to be in breach of SI 16.

16.8 Except for SI 16.1, these instructions shall also apply to spectator boats.

## Section 2 - Fleet Racing Only

### 20 ADDITIONAL RULES

- 20.1 Appendix P, Special Procedures for Rule 42, will apply.
- 20.2 For the Men's Two Person Dinghy High Performance and Two Person Paralympic events, RRS 44.1 and RRS P2.1 are changed so that the Two-Turns Penalty is replaced by the One-Turn Penalty.
- 20.3 For medal races, ISAF Addendum Q, *Umpired Fleet Racing*, will apply and takes precedence over any conflicting instructions.

### 21 IDENTIFICATION AND ADVERTISING WHILE RACING

- 21.1 Each day, the first, second and third boats in series ranking at the beginning of the day shall display a yellow, blue and red bib on the crew respectively. In addition, the organising authority may require a coloured dot to be applied to the mainsail. The organising authority will supply the bibs and coloured dots, and instructions for their use.
- 21.2 Boats shall display required event sponsor advertising. The organising authority will supply the advertising and instructions for their use.
- 21.3 For split fleet events, boats shall display a coloured band or ribbon corresponding to the fleet to which she has been assigned. The organising authority will supply the bands or ribbons and instructions for their use.

### 22 FORMAT OF RACING

- 22.1 The format is an Opening Series followed by a Medal Race, except for Paralympic events where there will be no Medal Race. If the event is split into fleets, the Opening Series will be divided into a Qualifying Series and a Final Series.
- 22.2 The number of fleets for an event is shown in SI Addendum C, Schedule of Races, and may be changed until **2000** on the day before the first scheduled race. An updated version of Addendum C will be posted on the Official Notice Board as part of these sailing instructions.
- 22.3 Qualifying Series:
- 22.3.1 Boats will be assigned to fleets Yellow or Blue, of, as nearly as possible, equal size and ability. Initial assignments will be made by a seeding committee appointed by the race committee. Those assignments will be posted by **2100** on the day before the first scheduled race for each event.
- 22.3.2 Boats will be reassigned to fleets after each day of racing, except if on the first day fewer than two races are completed by all fleets. If all fleets have completed the same number of races, boats will be reassigned on the basis of their ranks in the series. If all fleets have not completed the same number of races, the series scores for reassignment will be calculated for those races, numbered in order of completion, completed by all fleets. For two fleets, reassignments will be made as follows:



<i>Rank in series</i>	<i>Fleet assignment</i>
First	Yellow
Second	Blue
Third	Blue
Fourth	Yellow
Fifth	Yellow
Sixth	Blue
and so on	

If two or more boats have the same rank, they will be entered in the left column in the order of fleets in SI 22.3.1.

22.3.3 Assignments will be based on the ranking available at 2100 that day regardless of protests or requests for redress not yet decided.

22.3.4 If all fleets have not completed the same number of races by the end of a day, the fleets with fewer races will continue racing the following day until all fleets have completed the same number of races. All boats will thereafter race in the new fleets.

#### 22.4 Final Series:

22.4.1 Boats will be assigned to final-series fleets Gold and Silver, on the basis of their ranks in the qualifying series. There will be the same number of fleets in the final series as there were in the qualifying series. The final-series fleets will have, as nearly as possible, equal size but none larger than the Gold fleet. For the Men's Two Person Dinghy, High Performance event only, the Gold fleet will have 25 boats, regardless of the number of boats entered in the event. Boats with the best qualifying-series ranks will race all final-series races in the Gold fleet, boats with the next-best qualifying-series ranks will race in the Silver fleet.

22.4.2 Any recalculation of qualifying-series ranking after boats have been assigned to final-series fleets will not affect the assignments except that a redress decision may promote a boat to a higher fleet.

#### 22.5 Medal Race:

22.5.1 A medal race will be scheduled for each Olympic event with three or more opening series races completed.

22.5.2 For events with a Medal Race the ten boats ranked highest in the opening series will be assigned to compete in the medal race.

22.5.3 Assignments to the medal race will be based on the ranking available at 0800 on the day of the medal race. The International Jury may extend the time limit.

## 23 SCHEDULE OF RACES

23.1 The total number of races scheduled including medal races, if any, is as follows:

Event	Total Number of Races	Maximum Races per Day
Men's Two Person Dinghy High Performance	16	4
All other Olympic Class Events	11	3
Paralympic Class Events	10	3

23.2 The daily race schedule and the scheduled time of the warning signal for the first race is shown in SI Addendum C.

23.3 Races not sailed on the scheduled day may be sailed on a following day at the discretion of the race committee.

23.4 For single fleet events, the opening series will take place on 6 to 10 June and the medal race will take place on 11 June.

23.5 For split fleet events, the qualifying series will take place on 6 to 8 June, the final series will take place on 9 and 10 June and the medal race will take place on 11 June. The qualifying series will be extended if four races for all fleets have not been completed.

23.6 The warning signal for each succeeding race will be made as soon as practicable.

23.7 After a long postponement or to alert boats that a race or sequence of races will begin soon, an orange flag will be displayed with one sound for at least four minutes before a warning signal is displayed.

23.8 On the last day of racing, no warning signal will be made after 1530.

## 24 COURSE CHANGES

24.1 To change the next leg of the course, the race committee will lay a new mark (or move the finishing line) and remove the original mark as soon as practicable or move the original mark to the new position.

24.2 Courses will not be shortened. This changes RRS 32.

## 25 PROTESTS AND REQUESTS FOR REDRESS

25.1 Protest forms are available at the jury office, located in the Event Hall. Protests and requests for redress or reopening shall be delivered there within the appropriate time limit.

25.2 For each fleet, the protest time limit is 90 minutes after the last boat has finished the last race of the day.

25.3 Notices will be posted within 30 minutes of the protest time limit to inform competitors of hearings in which they are parties or named as witnesses. Hearings will be held in the protest rooms, located in the Event Hall, beginning at the time posted. Hearings may be scheduled to begin up to 30 minutes before the end of protest time.

- 25.4 Notices of protests by the race committee or protest committee will be posted to inform boats under RRS 61.1(b).
- 25.5 A list of boats that have been penalized under Appendix P for breaking RRS 42 will be posted
- 25.6 Breaches of SIs 2 and 9 will not be grounds for a protest by a boat. This changes RRS 60.1(a).
- 25.7 Penalties for breaches of NoR 23.2, and SIs 2, 8.2, 8.3, 13.2, 14, 16, 21, 40, 41, 42, and 44, or for breaches of class rules, are at the discretion of the protest committee.
- 25.8 A boat may accept a discretionary penalty for the breaches stated in 25.7 before a hearing concerning the same incident by completing a form available at the jury office.
- 25.9 On the last day of the qualifying series or opening series, or on the last scheduled day of racing, a request for reopening a hearing shall be delivered
- (a) within the protest time limit if the requesting party was informed of the decision on the previous day;
  - (b) no later than 30 minutes after the requesting party was informed of the decision on that day
- This changes RRS 66.
- 25.10 On the last day of the qualifying series or opening series, or on the last scheduled day of racing, a request for redress based on a jury decision shall be delivered no later than 30 minutes after the decision was posted. This changes RRS 62.2.

## 26 SCORING

- 26.1 The Low Point System of RRS Appendix A will apply. RRS B8 is deleted.
- 26.2 A boat starting later than 4 minutes after her starting signal will be scored Did Not Start. This changes RRS A4 and A5.
- 26.3 When fewer than 5 opening series races have been completed, a boat's series score will be the total of her race scores.
- 26.4 When 5 or more opening series races have been completed, a boat's series score will be the total of her race scores excluding her worst score. However, the score from the medal race will not be excluded.
- 26.5 The scoring abbreviation for a discretionary penalty imposed under SI 25.7 will be DPI.
- 26.6 To request correction of an alleged error in posted race or series results, a boat may complete a scoring enquiry form available at the race office.
- 26.7 Single Fleet Opening Series:
- 26.7.1 Three races are required to be completed to constitute a regatta.
- 26.8 Split Fleet Opening Series:
- 26.8.1 Three races are required to be completed to constitute a regatta. These races consist of those qualifying races completed by all fleets, any final races completed by the Gold fleet, and the medal race, if any.
  - 26.8.2 For the qualifying series, RRS A4.2 is changed so that those scores are based on the number of boats assigned to the largest fleet.



26.8.3 If at the end of the qualifying series some boats have more race scores than others, scores for the most recent races will be excluded so that all boats have the same number of race scores.

26.8.4 Final series fleets will be scored separately and different final series fleets need not have completed the same number of final races.

26.8.5 For final ranking, boats assigned to the Gold fleet will be ranked higher in the regatta than the boats assigned to the Silver fleet, and so on.

## 26.9 Medal Race:

26.9.1 The boats assigned to compete in the medal race will be ranked highest in the regatta except for a boat disqualified from the medal race under RRS 5 or 69.

26.9.2 RRS A4.1 is changed so that the points are doubled, and RRS A4.2 is changed so that the scores are based on the number of boats assigned to compete in that race.

26.9.3 For boats assigned to compete in the medal race, ties in the regatta score are broken by the medal race score. This changes RRS A8. For boats with the same points score in the medal race, ties in the regatta score are broken applying RRS A8 to the opening series scores.

26.9.4 A boat assigned to compete in the medal race shall make a genuine effort to start, sail the course and finish. The penalty for a breach of this instruction will be ranking the boat tenth in the regatta. If there are two such boats, they will be ranked ninth and tenth, in order of their opening-series ranks, and so on. This changes RRS A2.



## Section 3 - Match Racing Only

### 30 ADDITIONAL RULES

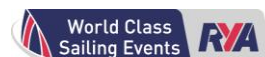
- 30.1 SI Addendum C, *Rules for the Handling of Boats*, will apply, including for practice racing. The International Elliott 6m Class rules do not apply.
- 30.2 RRS C3.1 is changed so that the attention signal will be made 7 minutes before the first start.
- 30.3 RRS C8.6 is deleted and replaced with "When the match umpires, together with at least one other umpire, decide that a boat has broken rule 14 and damage resulted, they may impose a penalty up to one point without a hearing. The competitor shall be informed of the penalty as soon as practicable and, at the time of being so informed, may request a hearing. The protest committee shall then proceed under rule C6.6. Any penalty decided by the protest committee may be more than the penalty imposed by the umpires. When the umpires decide that a penalty greater than one point is appropriate, they shall act under rule C8.4."
- 30.4 A boat may not protest another boat under SI E2.15 or E2.17. This changes RRS 60.1. When the umpires decide that a boat has broken SI E2.15 or E2.17, she shall be penalized under RRS C5.2 or RRS C5.3.
- 30.5 Add to RRS 41: "(e) help to recover from the water and return on board a crew member, provided the return on board is at the approximate location of the recovery."
- 30.6 Match racing competitors shall wear personal flotation devices while racing.

### 31 IDENTIFICATION AND ASSIGNMENT OF BOATS

- 31.1 Boats will be identified by numbers.
- 31.2 Boats shall display skippers' names on the mainsails as supplied by the organising authority.
- 31.3 Boats will be allocated by the organising authority for each stage in accordance with a pre-determined draw.
- 31.4 Boats will be exchanged in accordance with SI Addendum C, *Schedule of Races* and SI Addendum D, *Match Racing Pairing List*.
- 31.5 The organising authority will decide which boats are to be used for each stage and when it decides a boat should not be used, the skipper assigned that boat will be given the temporary use of another boat.

### 32 COMMUNICATIONS WITH COMPETITORS

- 32.1 Any change to the sailing instructions made ashore will be posted at least 30 minutes before the start of any match affected.
- 32.2 Any change to the sailing instructions made afloat will be signalled by the display of flag 3rd substitute with three sound signals. An umpire will communicate these changes either verbally or in writing.
- 32.3 The sail combination that may be used will be signaled from the RC boat with or before the attention signal:



<i>Signal</i>	<i>Sail Combination to be Used</i>
No Signal	Jib, Mainsail and Spinnaker
Flag Z	Jib and Mainsail only

32.4 Other restrictions or instructions may be given to the boats verbally by an umpire. Flag 3rd substitute is not required.

### **33 FORMAT OF RACING**

33.1 Teams will be paired in accordance with the tables in SI Addendum D.

33.2 Format:

#### 33.2.1 Stage 1: Opening Round Robin Series

33.2.1.1 The teams will be divided into 3 equal ability groups based on the ISAF Women Match Race Sailing ranking list 30 days prior to the start of the event. Each group will sail a round robin.

33.2.1.2 The 1st and 2nd team in each group go to the Gold Group (Stage 2).

33.2.1.3 The 3rd and 4th team in each group go to the Repechage (Stage 3).

33.2.1.4 The 5th and 6th team in each group go to the Silver Group (Stage 4).

33.2.1.5 The 7th and 8th team in each group go to the Bronze Group (Stage 5).

#### 33.2.2 Stage 2: Gold Group Round Robin Series

The 6 teams will sail a round robin. The results will be used to determine seeding 1 to 6 in the Quarter Finals (Stage 6).

#### 33.2.3 Stage 3: Repechage Round Robin Series

33.2.3.1 The 6 teams will sail a round robin.

33.2.3.2 The 1st and 2nd team go to the Quarter Finals (Stage 6) and their results are used to determine seeding 7 and 8 in that stage.

33.2.3.3 For the 3rd to 6th team, the result will determine places 9 through 12 in the final standings.

33.2.3.4 A sail-off will only be used for tie breaking if the tie involves the 1st or 2nd team and at least one of the other teams. A tie that only involves the 1st and 2nd team will be resolved with a draw. This changes RRS C11.3.

#### 33.2.4 Stage 4: Silver Round Robin Series

The 6 teams will sail a round robin. The results will determine places 13 through 18 in the final standings. A sail-off will not be used for tie breaking. This changes RRS C11.3.

#### 33.2.5 Stage 5: Bronze Group Round Robin Series

The 6 teams will sail a round robin. The results will determine places 19 through 24 in the final standings. A sail-off will not be used for tie breaking. This changes RRS C11.3.

#### 33.2.6 Stage 6: Quarter Finals



33.2.6.1 The 8 teams will sail knock-out series.

33.2.6.2 The teams will be paired such that the 1st team in Stage 2 will sail against the 2nd team in Stage 3, the 2nd team in Stage 2 will sail against the 1st team in Stage 3, the 3rd team in Stage 2 will sail against the 6th team in Stage 2, and the 4th team in Stage 2 will sail against the 5th team in Stage 2.

33.2.6.3 The team mentioned first in each of the pairs in SI 33.2.6.2 will be Yellow in the first match.

33.2.6.4 The winner of each pair will be the first team to score at least 3 points. The winners go to the Semi Finals (Stage 7) and the losers go to the Sail Offs (Stage 8).

### 33.2.7 Stage 7: Semi Finals

33.2.7.1 The 4 teams will sail a knock-out series.

33.2.7.2 The winner of the pair mentioned first in SI 33.2.6.2 will sail against the winner of the pair mentioned last. The two remaining winners will sail each other.

33.2.7.3 The assignment of sides will be decided through a draw.

33.2.7.4 The winner of each pair will be the first team to score at least 3 points. The winners go to the Final and the losers go to the Petit Final (Stage 9).

### 33.2.8 Stage 8: Sail Offs

33.2.8.1 The 4 teams will sail knock-out series.

33.2.8.2 The assignment of sides in each of these knock-out series will be decided through a draw.

33.2.8.3 The losers of Stage 6 will be paired the same way as the winners, see SI 33.2.7.2.

33.2.8.4 The winner of each pair will be the first team to score at least 1 point.

33.2.8.5 The two winners will go to the 5 to 6 Sail Off, and the two losers will go to the 7 to 8 Sail Off.

33.2.8.6 The winner of each pair will be the first team to score at least 1 point. The results will determine places 5 to 8 in the final standings.

### 33.2.9 Stage 9: Final and Petit Final

33.2.9.1 The 4 teams will sail knock-out series.

33.2.9.2 The assignment of sides will be decided through a draw.

33.2.9.3 The first team to score at least 3 points wins the Final. The first team to score at least 2 points wins the Petit Final. The results will determine places 1 to 4 in the final standings.

### 33.3 In a knock-out series between two teams:

33.3.1 The teams shall alternate assigned ends for each match. The initial assigned end will be decided in accordance with SI 33.2. This changes RRS C4.1.

- 33.3.2 When the series has been decided, further matches between these two teams will not be sailed, and subsequent matches will be moved up, eliminating a blank start.
- 33.3.3 Teams shall exchange boats after odd numbered matches of the series.

## 34 SCHEDULE OF RACES

- 34.1 The maximum number of matches scheduled is 186.
- 34.2 The daily race schedule and the scheduled time of the attention signal for the first flight, is shown in SI Addendum C, Schedule of Races.
- 34.3 The attention signal for each succeeding flight will be made as soon as practicable.
- 34.4 On the last day of racing, no warning signal will be made after 1530.
- 34.5 When a match cannot start at its intended time, the signals and starts of the following matches will remain as originally scheduled, leaving a blank start for the pair not starting. No starting sequence flags will be displayed for a blank start.
- 34.6 When, in a knock out series, a winner of a particular series has been determined, subsequent starts will be brought forward to eliminate blank starts. Competitors will be so advised verbally by an umpire.
- 34.7 Breakdown and time for repairs:
- 34.7.1 Before the attention signal of a flight, or within two minutes of finishing, or within five minutes of changing into a new boat, whichever is later, a boat may display flag L to signal breakdown or damage to the boat, her sails or injury to her crew and request a delay to the next start. She shall proceed as soon as possible to close to leeward of the the race committee starting boat and remain there, unless otherwise directed.
- 34.7.2 The time allowed for repairs shall be at the discretion of the race committee.
- 34.7.3 After the attention signal of a flight, a match will not be postponed or abandoned due to breakdown unless the breakdown signal was displayed as required by SI 34.7.1.
- 34.7.4 Except when RRS 62.1(b) applies, failure to effect repairs in the time allowed, or breakdowns after the attention signal shall not be grounds for redress. This changes RRS 62.

## 35 THE COURSE

- 35.1 The diagrams in SI Addendum B show the course, the course designations, the order in which marks are to be passed, and the side on which each mark is to be left.
- 35.2 No later than the attention signal, the race committee signal boat will display the course designation.
- 35.3 RRS 32 is deleted and replaced with: 'After the starting signal the race committee may abandon or shorten any match for any reason, after consulting with the match umpires when practical.'

## 36 CHANGE OF THE NEXT LEG OF THE COURSE

36.1 Changes to the course will be made by laying a new Mark 1.

36.2 RRS 33 and Race Signals are changed as follows:

36.2.1 Flag C and a coloured flag or board means 'The windward mark has been moved or replaced. Sail to a mark the same colour as the flag or board.'

36.2.2 When a change of course after starting only affects some matches these will be designated by the appropriate numeral pennant.

36.3 When a change of course is made for the first leg, the signal will be displayed from the race committee starting boat with the preparatory signal for each match affected. The preparatory signal will be followed by a series of repetitive sound signals.



## **Section 4 - Other Instructions for All Racing**

### **40 TRASH DISPOSAL**

As sailors, we seek to protect and restore our oceans and coastal waters. Boats shall not intentionally put trash in the water. Trash may be placed aboard support and race committee boats.

### **41 BERTHING and BOAT PARK**

When berthed, boats shall be kept in their assigned places in the harbour or boat park.

### **42 HAUL-OUT RESTRICTIONS**

Keel boats shall not be hauled out during the regatta except with and according to the terms of prior written permission of the race committee.

### **43 DIVING EQUIPMENT AND PLASTIC POOLS**

Underwater breathing apparatus and plastic pools or their equivalent shall not be used around keel boats between the preparatory signal of the first race and the end of the regatta.

### **44 RADIO COMMUNICATION**

A boat shall neither make radio transmissions while racing nor receive radio communications not available to all boats, except in an emergency or when using equipment provided by the race committee. This restriction also applies to mobile telephones.

### **45 PRIZES**

Medals will be awarded to the top 3 boats in each event. The organising authority may alter prizes if less than 10 boats are entered in an event.

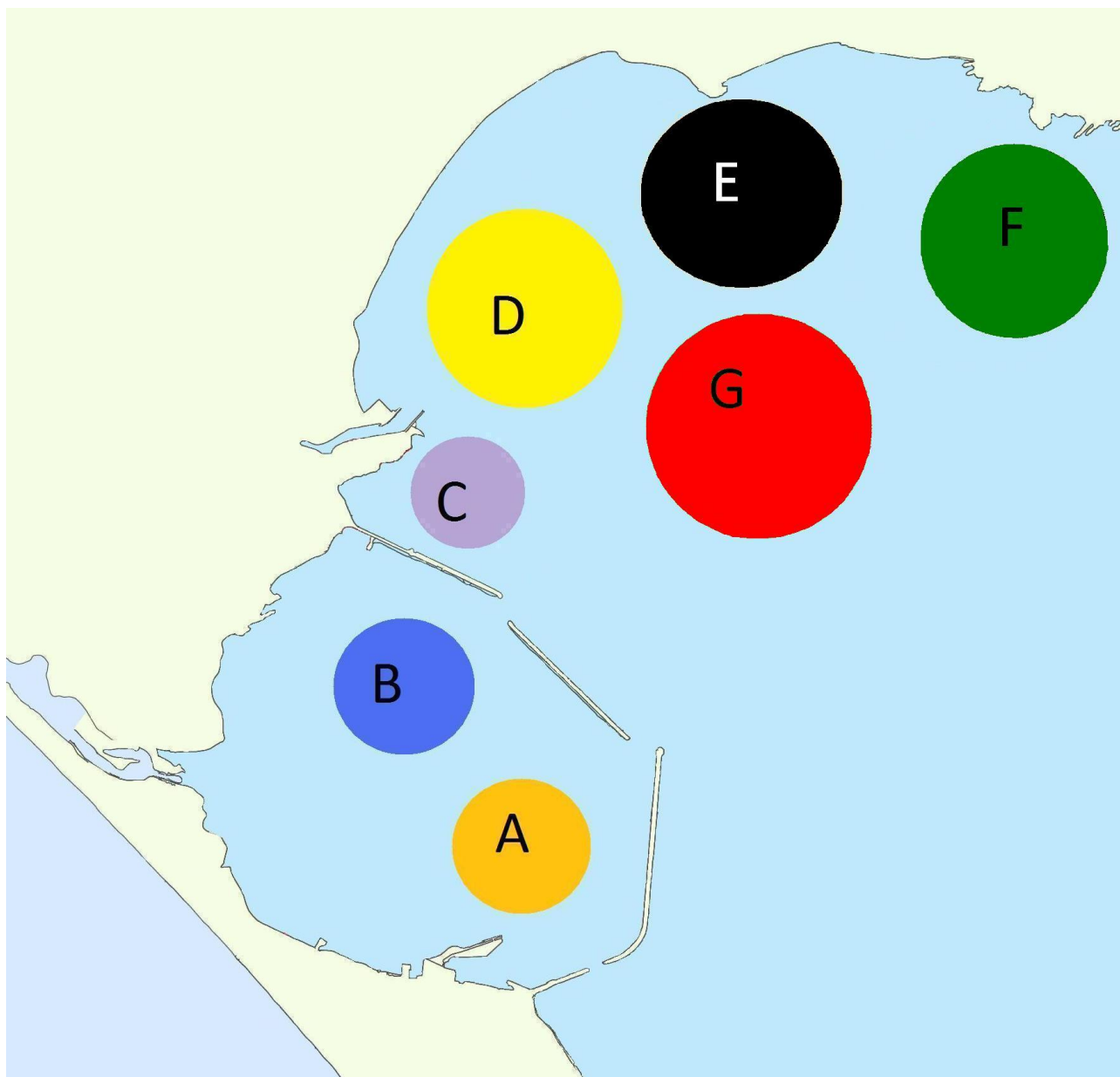
### **46 DISCLAIMER OF LIABILITY**

Competitors participate in the regatta entirely at their own risk. See RRS 4, Decision to Race. Neither the organising authority nor ISAF will accept any liability for material damage or personal injury or death sustained in conjunction with or prior to, during, or after the regatta.

### **47 INSURANCE**

Each participating boat shall be insured with valid third-party liability insurance with a minimum cover of £1,500,000 (or equivalent).

## ADDENDUM A - COURSE AREAS



**Initial** course areas are intended as follows: Course A – Paralympic Classes, Course B – RS:X, Course C – Women’s match racing, Course D – 49er, Course E – 470, Course F – Finn and Star, Course G – Laser and Laser Radial

Course areas may be changed during the regatta.

# ADDENDUM B - COURSE ILLUSTRATIONS

**I**

**Course: Inner Trapezoid**

Signal	Marking Rounding Order
I2	Start - 1 - 4s/4p - 1 - 2 - 3p - Finish
I3	Start - 1 - 4s/4p - 1 - 4s/4p - 1 - 2 - 3p - Finish
I4	Start - 1 - 4s/4p - 1 - 4s/4p - 1 - 4s/4p - 1 - 2 - 3p - Finish

**O**

**Course: Outer Trapezoid**

Signal	Marking Rounding Order
O2	Start - 1 - 2 - 3s/3p - 2 - 3p - Finish
O3	Start - 1 - 2 - 3s/3p - 2 - 3s/3p - 2 - 3p - Finish
O4	Start - 1 - 2 - 3s/3p - 2 - 3s/3p - 2 - 3s/3p - 2 - 3p - Finish

**L**

**Course: Windward/Leeward**

Signal	Marking Rounding Order
L2	Start - 1 - 4s/4p - 1 - Finish
L3	Start - 1 - 4s/4p - 1 - 4s/4p - 1 - Finish
L4	Start - 1 - 4s/4p - 1 - 4s/4p - 1 - 4s/4p - 1 - Finish

**IA**

**Course: Same As Course I Except With Offset Mark 1A**

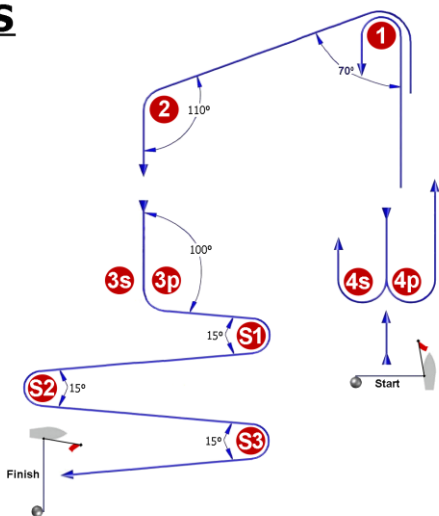
Signal	Marking Rounding Order
IA2	Start - 1 - 1a - 4s/4p - 1 - 1a - 2 - 3p - Finish
IA3	Start - 1 - 1a - 4s/4p - 1 - 1a - 4s/4p - 1 - 1a - 2 - 3p - Finish
IA4	Start - 1 - 1a - 4s/4p - 1 - 1a - 4s/4p - 1 - 1a - 4s/4p - 1 - 1a - 2 - 3p - Finish

**LA**

**Course: Same As Course L Except With Offset Mark 1A**

Signal	Marking Rounding Order
LA2	Start - 1 - 1a - 4s/4p - 1 - 1a - Finish
LA3	Start - 1 - 1a - 4s/4p - 1 - 1a - 4s/4p - 1 - 1a - Finish
LA4	Start - 1 - 1a - 4s/4p - 1 - 1a - 4s/4p - 1 - 1a - 4s/4p - 1 - 1a - Finish

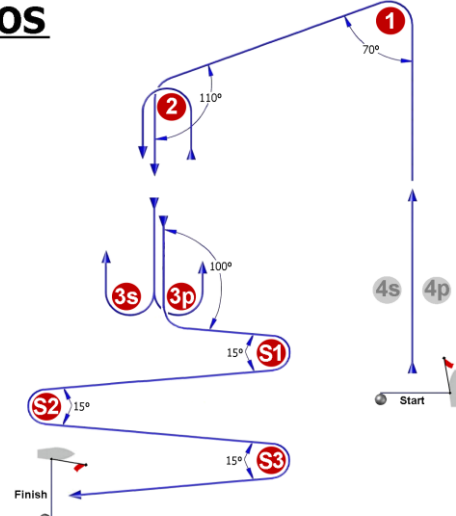
# IS



Course: Inner Slalom

Signal	Marking Rounding Order
IS2	Start - 1 - 4s/4p - 1 - 2 - 3p - S1 - S2 - S3 - Finish
IS3	Start - 1 - 4s/4p - 1 - 4s/4p - 1 - 2 - 3p - S1 - S2 - S3 - Finish
IS4	Start - 1 - 4s/4p - 1 - 4s/4p - 1 - 4s/4p - 1 - 2 - 3p - S1 - S2 - S3 - Finish

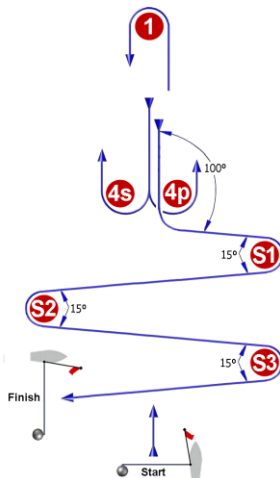
# OS



Course: Outer Slalom

Signal	Marking Rounding Order
OS2	Start - 1 - 2 - 3s/3p - 2 - 3p - S1 - S2 - S3 - Finish
OS3	Start - 1 - 2 - 3s/3p - 2 - 3s/3p - 2 - 3p - S1 - S2 - S3 - Finish
OS4	Start - 1 - 2 - 3s/3p - 2 - 3s/3p - 2 - 3s/3p - 2 - 3p - S1 - S2 - S3 - Finish

# LS



Course: Windward/Leeward With Slalom Finish

Signal	Marking Rounding Order
LS2	Start - 1 - 4s/4p - 1 - 4p - S1 - S2 - S3 - Finish
LS3	Start - 1 - 4s/4p - 1 - 4s/4p - 1 - 4p - S1 - S2 - S3 - Finish
LS4	Start - 1 - 4s/4p - 1 - 4s/4p - 1 - 4s/4p - 1 - 4p - S1 - S2 - S3 - Finish

# M



**Note:**  
For the purposes of RRS C7, Mark 1 will be the windward mark and Mark 2 will be the leeward mark.

Course: Windward/Leeward With Marks To Starboard

Signal	Marking Rounding Order
M1	Start - 1 - Finish
M2	Start - 1 - 2 - 1 - Finish
M3	Start - 1 - 2 - 1 - 2 - 1 - Finish
M4	Start - 1 - 2 - 1 - 2 - 1 - 2 - 1 - Finish

## ADDENDUM C - SCHEDULE OF RACES

Event	Area	Total number of races	Time of 1st <b>warning signal</b> and scheduled races (#) per day											
			Mon 6		Tue 7		Wed 8		Thu 9		Fri 10		Sat 11	
			Hrs	#	Hrs	#	Hrs	#	Hrs	#	Hrs	#	Hrs	#
Paralympic one person	Alpha	10	1300	2	1100	2	1300	2	1100	2	1300	2		
Paralympic two person	Alpha	10	1100	2	1300	2	1100	2	1300	2	1100	2		
Paralympic three person	Alpha	10	1100	2	1300	2	1100	2	1300	2	1100	2		
Men Windsurfer 2 fleets	Bravo	11	1100	2	1100	2	1100	2	1100	2	1100	2	1330	Medal B
Women Windsurfer	Bravo	11	1100	2	1100	2	1100	2	1100	2	1100	2	1230	Medal B
Women Keelboat MR	Charlie	186	1000		1000		1000		1000		1000		TBA	Finals
Men two person dinghy HP 2 fleets	Delta	16	1100	3	1100	3	1100	3	1100	3	1100	3	1200	Medal A
Men two person dinghy 2 fleets	Echo	11	1100	2	1100	2	1100	2	1100	2	1100	2	1030	Medal B
Women two person dinghy	Echo	11	1100	2	1100	2	1100	2	1100	2	1100	2	1130	Medal B
Men one person dinghy heavy	Foxtrot	11	1100	2	1100	2	1100	2	1100	2	1100	2	1400	Medal A
Men Keelboat	Foxtrot	11	1100	2	1100	2	1100	2	1100	2	1100	2	1300	Medal A
Men one person dinghy 2 fleets	Golf	11	1100	2	1300	2	1100	2	1300	2	1100	2	1000	Medal A
Women one person dinghy 2 fleets	Golf	11	1300	2	1100	2	1300	2	1100	2	1300	2	1100	Medal A

## ADDENDUM D - WOMEN'S KEELBOAT MATCH RACING PAIRING LISTS

The pairing lists for each stage will be posted in due time on the Official Notice Board.

## ADDENDUM E - HANDLING OF PROVIDED BOATS

### 1 GENERAL

While all reasonable steps are taken to equalise the boats variations will not be grounds for redress. This changes RRS 62.

### 2 PROHIBITED ITEMS and ACTIONS

Except in an emergency or in order to prevent damage or injury, or when directed otherwise by an umpire the following are prohibited.

- 2.1 Any additions, omissions or alterations to the equipment supplied.
- 2.2 The use of any equipment for a purpose other than that intended or specifically permitted.
- 2.3 The replacement of any equipment without the approval of the RC.
- 2.4 Sailing the boat in a manner that it is reasonable to predict that significant further damage would result.
- 2.5 Moving equipment from its normal stowage position except when being used.
- 2.6 Boarding a boat without prior permission.
- 2.7 Taking a boat from its berth or mooring without having paid the required damage deposit or having permission from the RC, or, on race days, while 'AP' is displayed ashore.
- 2.8 Hauling out a boat or cleaning surfaces below the waterline.
- 2.9 Using a flattener as a reef.
- 2.10 Attaching lines to the fabric of spinnakers.
- 2.11 Perforating sails, even to attach tell tales.
- 2.12 Radio transmission (including mobile telephones), except to report damage or in response to a request from the RC.
- 2.13 Adjusting or altering the tension of standing rigging.
- 2.14 The use of electronic instruments other than compass and watches.
- 2.15 Using the spinnaker pole to wing out the foresail.
- 2.16 Marking directly on the hull or deck with permanent ink.
- 2.17 The use of the shrouds (including any inner shrouds) above the lower bottle screw (turnbuckle) to facilitate tacking or gybing, or to aid the projection of a crew member outboard is prohibited.

2.18 Except in an emergency or when directed by a race official, no person from a team's support crew shall go onboard a racing boat or physically assist a team with preparations or repairs.

### 3 PERMITTED ITEMS and ACTIONS

The following are permitted.

3.1 Taking on board the following equipment:

- (a) basic hand tools
- (b) adhesive tape
- (c) line (elastic or otherwise of 4 mm diameter or less)
- (d) marking pens
- (e) tell tale material
- (f) watch, timers and hand held compass
- (g) shackles and clevice pins
- (h) velcro tape
- (i) spare flags

3.2 Using the items in 3.1 to:

- (a) prevent fouling of lines, sails and sheets
- (b) attach tell tales
- (c) prevent sails being damaged or falling overboard
- (d) mark control settings
- (e) make minor repairs and permitted adjustments
- (f) make signals as per RRS Appendix C6
- (g) adjusting tension on top batten, only after crew change. Only one adjustment is allowed and a short time to do so

3.3 Fixing a spinnaker sheet catcher at the bow, providing that it does not extend the length of the boat more than 100 mm and does not require any repair after removal.

3.4 Fixing a watch or timer to the mast providing that it does not require any repair after removal.

### 4 MANDATORY ITEMS and ACTIONS

The following are mandatory.

4.1 The completion of a written damage report before leaving a boat and submitting it to the RC, even if no damage or loss is recorded. Reports shall include any evidence of matters which could cause damage or disadvantage to the boat in future matches.

4.2 At the end of each sailing day:

- (a) folding, bagging and placement of the sails as directed.
- (b) leaving the boat in the same state of cleanliness as when first boarded that day.



- 4.3 At the end of the final day for a particular boat, cleaning the boat (cabin and decks), removing all trash and removing all tape and marks.
- 4.4 Any request to alter, in any way, the equipment on a boat shall be in writing and worded to permit a yes/no answer.
- 4.5 Complying with any regulations, including speed restrictions and navigation marks, while leaving or returning to the berth or mooring.
- 4.6 A breach of items 4.2 and 4.3 will be considered as damage and the cost of rectification will be deducted from the damage deposit.
- 4.7 When towing, the tow line should be attached to the forward pad eye (not the mast). If multiple boats on one tow, the after attachment should run through the small pad eye on the transom and attached to the pad eye just aft of the main sheet track.



## ADDENDUM Q - UMPIRED FLEET RACES

*Under rule 86.2 and Regulation 31.1.3, the ISAF has approved the use of these sailing instructions as an addendum to the sailing instructions in World Championship Grade, Grade 1 and Grade C1 events from December 14, 2009 to the end of 2010, for umpired fleet racing in the last race of each series for the Olympic classes. Similar events are also encouraged to use the addendum. This can be done under rule 86.3 if the national authority prescribes that rule changes are allowed for the purpose of development and testing. Please note that the national authority may prescribe that such changes require its approval. Events that use this addendum are requested to provide feedback to the ISAF to support further development.*

*Races may be sailed under the sailing instructions in this addendum only if the notice of race so states and the addendum is included in the sailing instructions.*

*Use of this addendum is recommended for races in which about ten one-design boats compete with umpires present. There should be one umpire boat for every three or four boats in the fleet.*

These sailing instructions change the definitions Finish and Proper Course, and rules 20.1, 28.1, 44, 60, 61, 62, 63, 64.1, 65, 66, 70, 78.3 and B7.

### Q1 CHANGES TO RACING RULES

Additional changes to rules are made in instructions Q2, Q3, Q4, and Q5.

#### Q1.1 Changes to the Definitions and the Rules of Part 2 and Part 4

- (a) The definition Finish is changed to

A boat finishes when any part of her hull, or crew or equipment in normal position, crosses the finishing line in the direction of the course from the last mark, either for the first time or after completing any penalties or, under rule 28.1, after correcting an error made at the finishing line.

- (b) Add to the definition Proper Course: 'A boat taking a penalty or manoeuvring to take a penalty is not sailing a proper course.'
- (c) When rule 20.1 applies, the following arm signals are required in addition to the hails:
- (1) for 'Room to tack', repeatedly and clearly pointing to windward; and
  - (2) for 'You tack', repeatedly and clearly pointing at the other boat and waving the arm to windward.

This instruction Q1.1(c) does not apply to boards.

#### Q1.2 Changes to Rules Involving Protests, Requests for Redress, Penalties and Exoneration

- (a) The first sentence of rule 44.1 is replaced with: 'A boat may take a One-Turn Penalty when she may have broken a rule of Part 2 (except rule 14 when she has caused damage or injury) or rule 31 while racing.'
- (b) For boards, the One-Turn Penalty is one 360 degree turn with no requirement for a tack or a gybe.
- (c) Rule 60.1 is replaced with 'A boat may protest another boat or request redress provided she complies with instructions Q2.1 and Q2.4.'

- (d) The third sentence of rule 61.1(a) and all of rule 61.1(a)(2) are deleted. Rule B7 is deleted.
- (e) Rule 62.1(a), (b) and (d) are deleted.
- (f) Rule 64.1(c) is changed so that the provision for exonerating a boat may be applied by the umpires without a hearing, and it takes precedence over any conflicting instruction of this addendum.

## **Q2 PROTESTS AND REQUESTS FOR REDRESS BY BOATS**

Q2.1 While racing, a boat may protest another boat under a rule of Part 2, except rule 14, but only for an incident in which she was involved, or under rule 31. To do so she shall hail 'Protest' and conspicuously display a red flag at the first reasonable opportunity for each. She shall remove the flag before, or at the first reasonable opportunity after a boat involved in the incident has taken a penalty voluntarily or after an umpire's decision. However, a board need not display a red flag.

Q2.2 A boat that protests as provided in instruction Q2.1 is not entitled to a hearing. Instead, a boat involved in the incident may acknowledge breaking a rule by promptly taking a One-Turn Penalty. If no boat takes a penalty voluntarily, an umpire will signal a decision as provided in instruction Q3.1.

Q2.3 At the finishing line the race committee will display each boat's sail number and her finishing place or scoring abbreviation. After this has been done for all boats, the race committee will promptly display flag B with one sound. Two minutes later flag B will be removed with one sound.

Q2.4 A boat intending to

- (a) protest another boat under a rule other than instruction Q3.2 or Q4.2(a), rule 42, 44 or a rule listed in instruction Q2.1,
- (b) protest another boat under rule 14 if there was contact that caused damage or injury, or
- (c) request redress

shall hail the race committee before or during the display of flag B. The same time limit applies to protests under instructions Q5.5 and Q5.6. The protest committee may extend the time limit if there is good reason to do so.

Q2.5 The race committee will promptly inform the protest committee about any protests or requests for redress made under instruction Q2.4.

## **Q3 UMPIRE SIGNALS AND IMPOSED PENALTIES**

Q3.1 An umpire will signal a decision as follows:

- (a) A green flag or a green and white flag with one long sound means 'No penalty.'
- (b) A red flag with one long sound means 'A penalty is imposed on one or more boats.' The umpire will hail or signal to identify each penalized boat.
- (c) A black flag with one long sound means 'A boat is disqualified.' The umpire will hail or signal to identify the boat disqualified.

Q3.2 (a) A boat penalized under instruction Q3.1(b) shall take a One-Turn Penalty.



- (b) A boat disqualified under instruction Q3.1(c) shall promptly leave the course area.

#### **Q4 PENALTIES AND PROTESTS INITIATED BY AN UMPIRE; ROUNDING OR PASSING MARKS**

##### Q4.1 When a boat

- (a) breaks rule 31 and does not take a penalty,
- (b) gains an advantage despite taking a penalty,
- (c) deliberately breaks a rule,
- (d) commits a breach of sportsmanship, or
- (e) fails to comply with instruction Q3.2 or to take a penalty when required to do so by an umpire,

an umpire may penalize her without a protest by another boat. The umpire may impose one or more penalties to be taken under rule 44, each signalled by displaying a red flag and hailing the boat, or disqualify her under instruction Q3.1(c), or report the incident to the protest committee for further action.

Q4.2 (a) A boat shall not round or pass a mark on the wrong side. If she does so, she may correct her error as provided in rule 28.1 only if she does so before she rounds or passes the next mark or finishes.

- (b) When a boat breaks instruction Q4.2(a) and fails to correct her error before rounding or passing the next mark or finishing, an umpire may disqualify her under instruction Q3.1(c).

Q4.3 An umpire who decides, based on his own observation or a report received from any source, that a boat may have broken a rule, other than instruction Q3.2 or Q4.2(a) or a rule listed in instruction Q2.1, may inform the protest committee for its action under rule 60.3. However, he will not inform the protest committee of an alleged breach of rule 14 unless there is damage or injury.

#### **Q5 PROTESTS; REQUESTS FOR REDRESS OR REOPENING; APPEALS; OTHER PROCEEDINGS**

Q5.1 No proceedings of any kind may be taken in relation to any action or non-action by an umpire.

Q5.2 A boat may not base an appeal on an alleged improper action, omission or decision of the umpires or the protest committee. In rule 66 the third sentence is changed to 'A party to the hearing may not ask for a reopening.'

- Q5.3 (a) Protests and requests for redress need not be in writing.
- (b) The protest committee may take evidence and conduct the hearing in any way it considers appropriate and may communicate its decision orally.
- (c) If the protest committee decides that a breach of a rule has had no effect on the outcome of the race, it may impose a penalty of points or fraction of points or make another arrangement it decides is equitable, which may be to impose no penalty.

Q5.4 The race committee will not protest a boat.

- Q5.5 The event measurement committee, or, when no event measurement committee is appointed, the event measurer or equipment inspector for the event, may protest a boat for an alleged breach of a measurement rule or rule 43.1(a) or 43.1(b).
- Q5.6 The protest committee may protest a boat under rule 60.3. However, it will not protest a boat for breaking instruction Q3.2 or Q4.2(a), a rule listed in instruction Q2.1, or rule 14 unless there is damage or injury.

